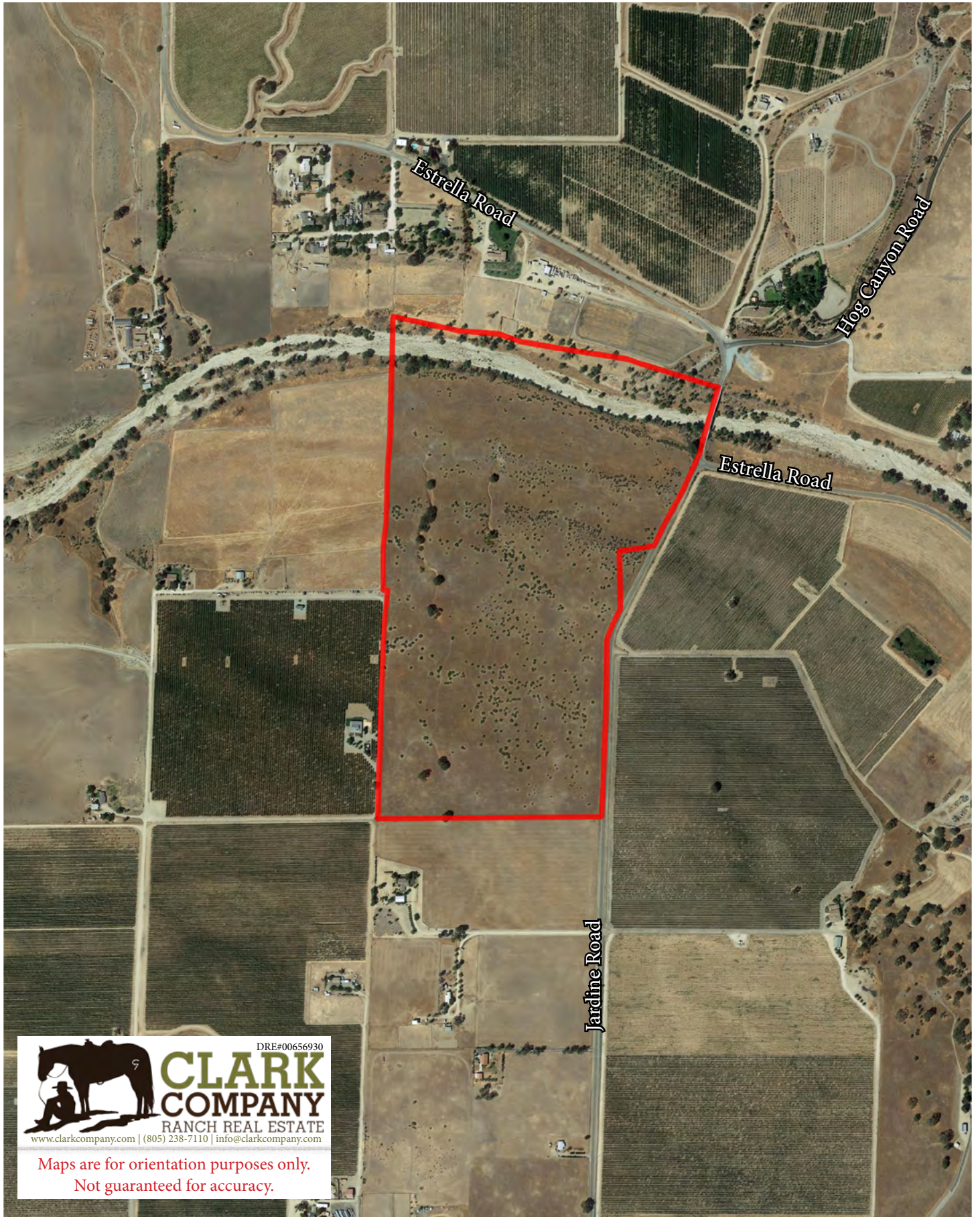


ESTRELLA-JARDINE ~ Acreage ~

Jardine Road | Paso Robles, California 93446



DRE#00656930
CLARK COMPANY
RANCH REAL ESTATE
www.clarkcompany.com | (805) 238-7110 | info@clarkcompany.com

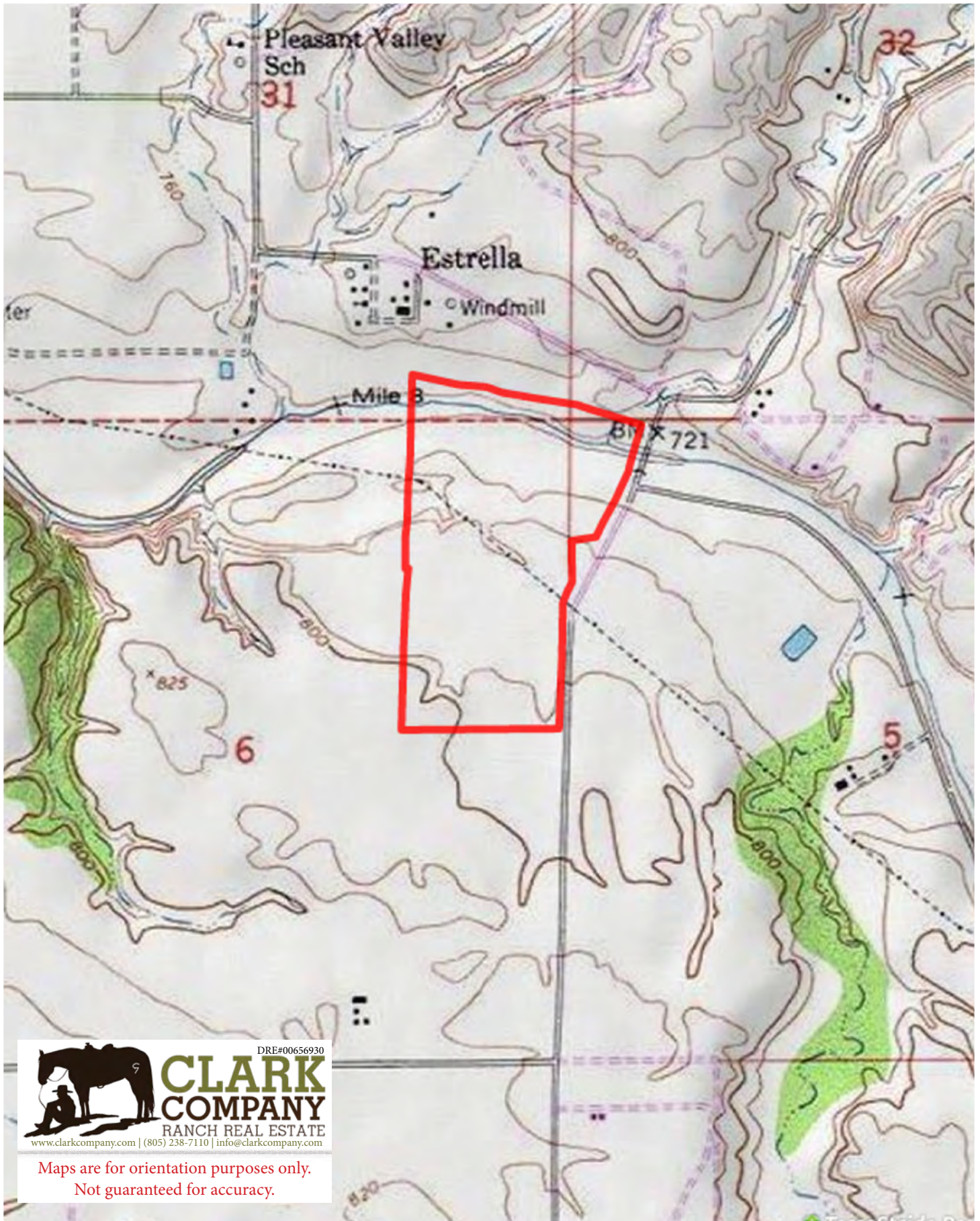
Maps are for orientation purposes only.
Not guaranteed for accuracy.

THE ENCLOSED INFORMATION HAS BEEN OBTAINED FROM SOURCES THAT WE DEEM RELIABLE; HOWEVER, IT IS NOT GUARANTEED BY CLARK COMPANY AND IS PRESENTED SUBJECT TO CORRECTIONS, ERRORS, PRIOR SALE, CHANGES OR WITHDRAWAL FROM THE MARKET WITHOUT NOTICE.

ESTRELLA-JARDINE

~ Acreage ~

Jardine Road | Paso Robles, California 93446



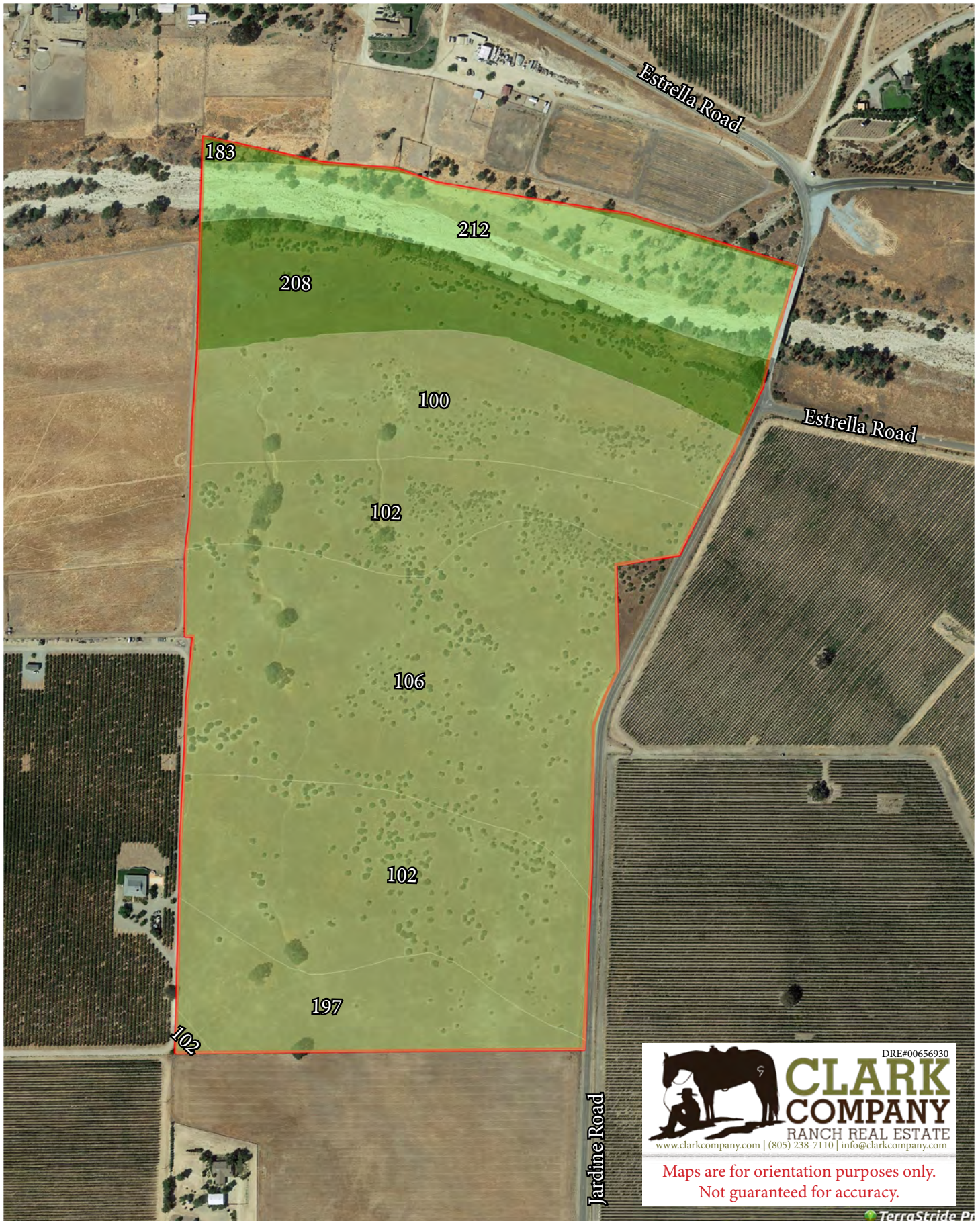
DRE#00656930
CLARK COMPANY
RANCH REAL ESTATE
www.clarkcompany.com | (805) 238-7110 | info@clarkcompany.com

Maps are for orientation purposes only.
Not guaranteed for accuracy.

THE ENCLOSED INFORMATION HAS BEEN OBTAINED FROM SOURCES THAT WE DEEM RELIABLE; HOWEVER, IT IS NOT GUARANTEED BY CLARK COMPANY AND IS PRESENTED SUBJECT TO CORRECTIONS, ERRORS, PRIOR SALE, CHANGES OR WITHDRAWAL FROM THE MARKET WITHOUT NOTICE.

ESTRELLA-JARDINE ~ Acreage ~

Jardine Road | Paso Robles, California 93446



DRE#00656930
CLARK COMPANY
RANCH REAL ESTATE
www.clarkcompany.com | (805) 238-7110 | info@clarkcompany.com

Maps are for orientation purposes only.
Not guaranteed for accuracy.

THE ENCLOSED INFORMATION HAS BEEN OBTAINED FROM SOURCES THAT WE DEEM RELIABLE; HOWEVER, IT IS NOT GUARANTEED BY CLARK COMPANY AND IS PRESENTED SUBJECT TO CORRECTIONS, ERRORS, PRIOR SALE, CHANGES OR WITHDRAWAL FROM THE MARKET WITHOUT NOTICE.

SOIL REPORT

Symbol	Map Unit Description	Farmland Class	Area (AC)	Available Water Storage (0-150cm - Weighted Avg)	Flooding Frequency (Max)	Drainage Class (Dominant Condition)	Drainage Class (Wettest Component)	Hydric Classification	Water Table Depth (Annual Min)	Water Table Depth (April to June Min)	Bedrock Depth (Min)	Soil Order
106	Arbuckle -San Ysidro complex, 2 to 9 percent slopes	Farmland of statewide importance	25.31	17.2	None	Well drained	Moderately well drained	1	0	0	0	Alfisols
102	Arbuckle -Positas complex, 9 to 15 percent slopes	Not prime farmland	25.21	18.5	None	Well drained	Well drained	0	0	0	0	Alfisols
100	Arbuckle fine sandy loam, 0 to 2 percent slopes	Prime farmland if irrigated	14.27	20.4	None	Well drained	Well drained	0	0	0	0	Alfisols
208	Still clay loam, 0 to 2 percent slopes	Prime farmland if irrigated	11.56	24 .6	None	Well drained	Well drained	1	0	0	0	Mollisols
212	Xerofluvents -Riverwash association	Not prime farmland	10.12	0.0	Frequent	Somewhat excessively drained	Somewhat excessively drained	80	31	0	0	Entisols
197	San Ysidro loam, 0 to 2 percent slopes	Farmland of statewide importance	7.63	17.5	None	Moderately well drained	Moderately well drained	1	0	0	0	Alfisols
183	Pico fine sandy loam, 0 to 2 percent slopes	Prime farmland if irrigated	0.74	18.0	None	Well drained	Well drained	0	0	0	0	Mollisols

